

Raw photograph file of Figure 3F

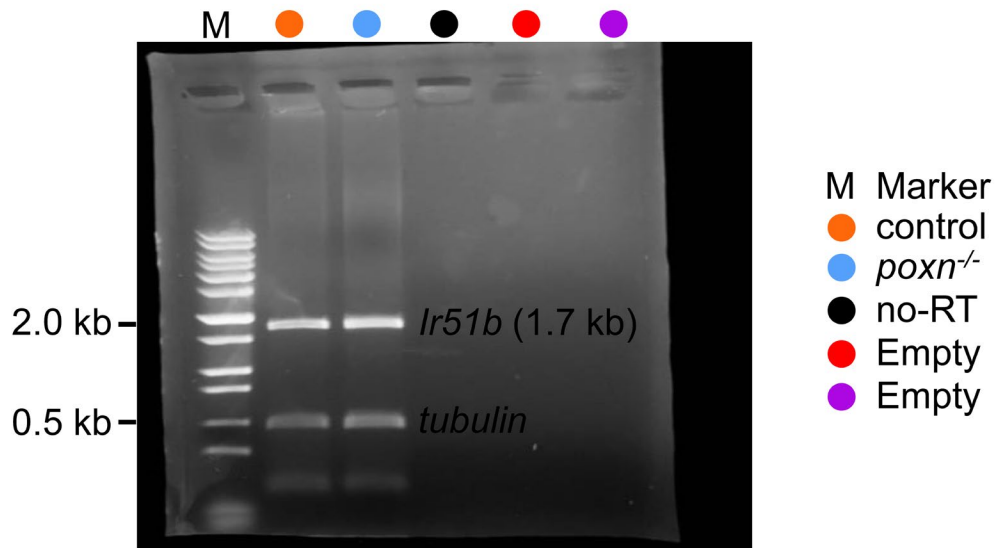


Figure 3—Source Data 2. Original gel picture to Figure 3, panel F. Given gel is the picture of results from RT-PCR showing *Ir51b* expression in control (*w*¹¹¹⁸) and *poxn* null alleles (*poxn*⁷⁰ and *poxn*^{ΔM22-B5}) from pharynx. In lanes designated as "no-RT," polyA⁺ RNA extracts underwent RT omission, and the absence of PCR products serves as evidence of the absence of genomic DNA contamination. Amplified tubulin (0.5 kb) was used as control. DNA ladder marker is denoted by "M." Dots color represents respective genotypes indicated in the legend section. (lanes 5 and 6; is empty, not shown in figure 3F).